

TIDAPA GREENWAY PROJECT

.....
HIGH LEVEL ASSESSMENT & STRATEGY
.....

JULY 2020

DOCUMENT INTRODUCTION

PROJECT OVERVIEW

The Tidapa Greenway Project links Mt Annan Botanic Gardens to the Western Sydney Aerotropolis, via old Camden Town Centre. It has significant heritage potential, connecting 15 historic homesteads along a safe and dedicated cycle path, whilst providing opportunities for Aboriginal communities to share their stories that at present, are not widely known. Within the project site boundary, located adjacent to Oran Park, the Tidapa Greenway Project would provide a key public link along this Greenway, within an area of private property otherwise inaccessible to the public.

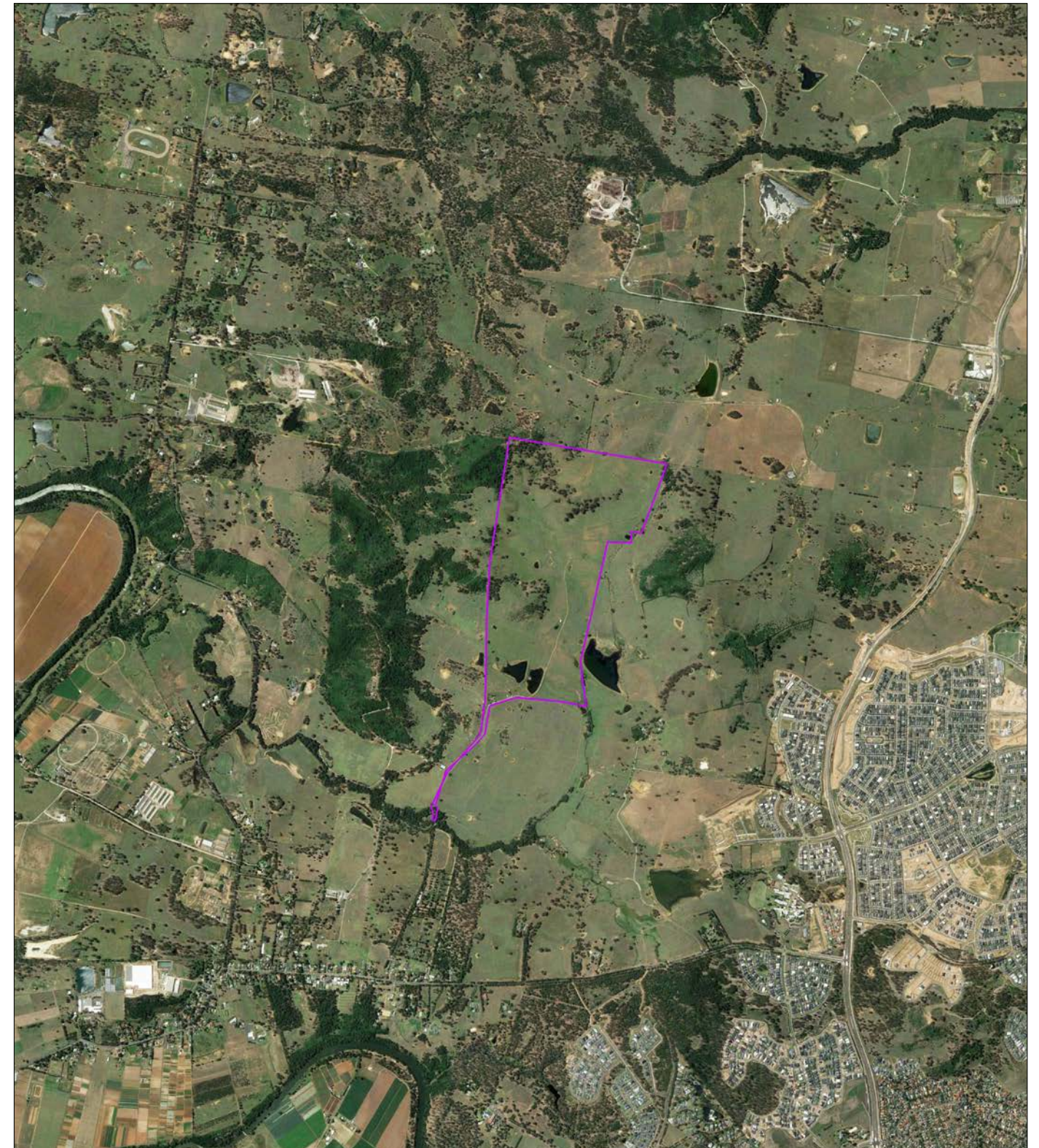
DOCUMENT INTRODUCTION

The purpose of this document is to provide a high-level assessment of the broader Greenway strategy and Tidapa masterplan, and to recognise further potentials and realignments to the composition of each.

A study of relevant background planning documents was used to synthesise and inform a set of key principles that relate to the open space, biodiversity, urban growth and infrastructure targets of the Western City District and local areas. This information was used as a foundation for assessing the existing regional conditions through GIS mapping, taking into account a broad range of layers from environmental systems to urban planning and future growth.

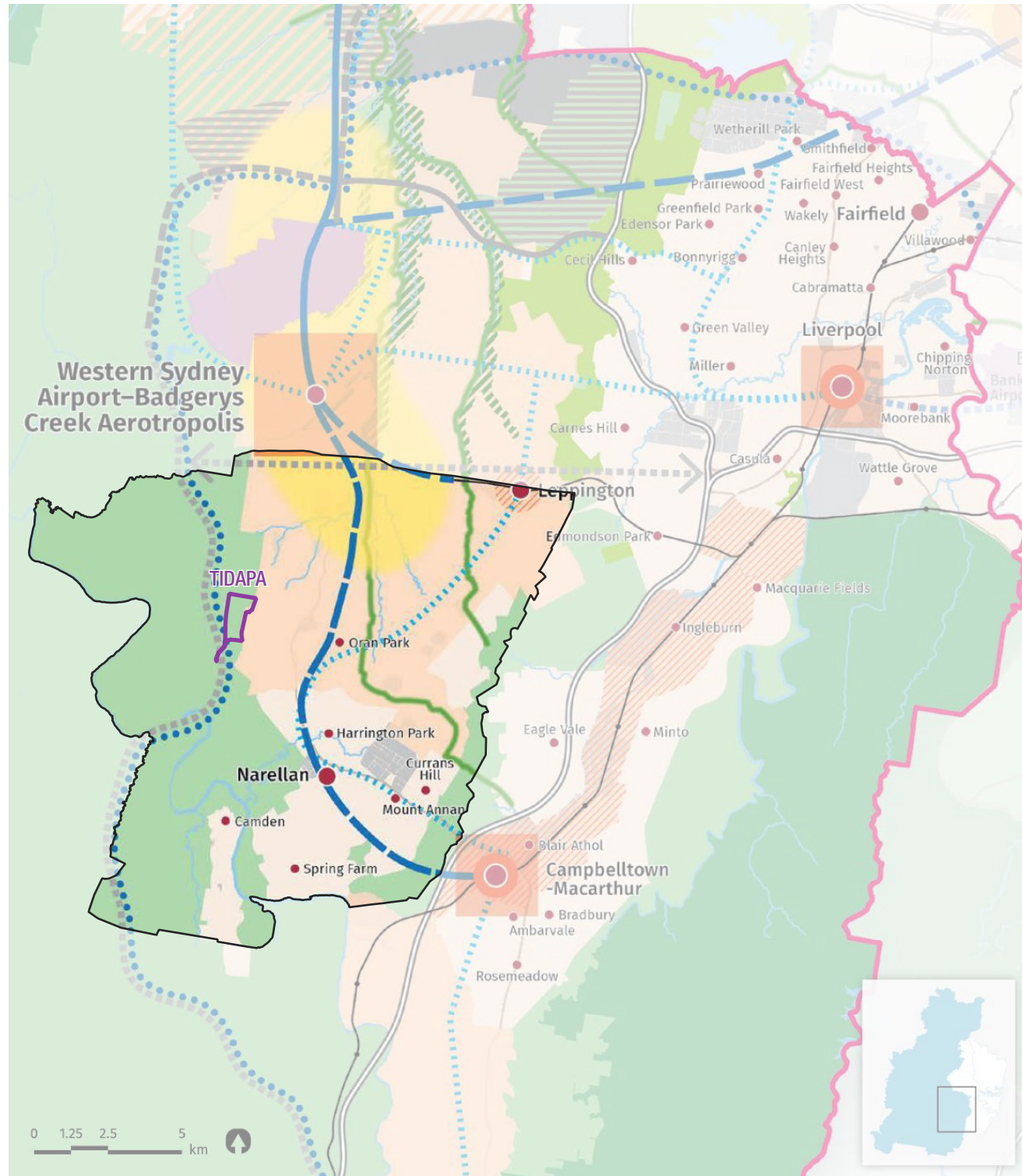
From here, a strategic concept for the Greenway was established, recognising four regional features to ‘anchor’ the Greenway geographically, whilst providing destinations to the north, east, south and west of the project site itself. This led to further analysis down to the scale of the site and masterplan, with considerations for the width of the Greenway through the site, environmental factors such as water and creek rehabilitation, and a variety of programs and character areas that can be created.

Outcomes from the masterplan assessment led to the implementation of ‘nodes’ positioned at the intersection of green linkages as points for strategic placement of various amenities and programs, along with realignments to the shape of the Greenway to benefit the allocation of widths and open space area.



WESTERN CITY DISTRICT PLAN

Greater Sydney Commission, 2018



Western City District, Urban Area South. Source: Greater Sydney Commission

The Western City District Plan forms part of 'A Metropolis Of Three Cities' - a 40-year vision for Greater Sydney to manage social, economic and environmental matters, integrating land-use, transport and infrastructure planning between the three tiers of government and across State agencies.

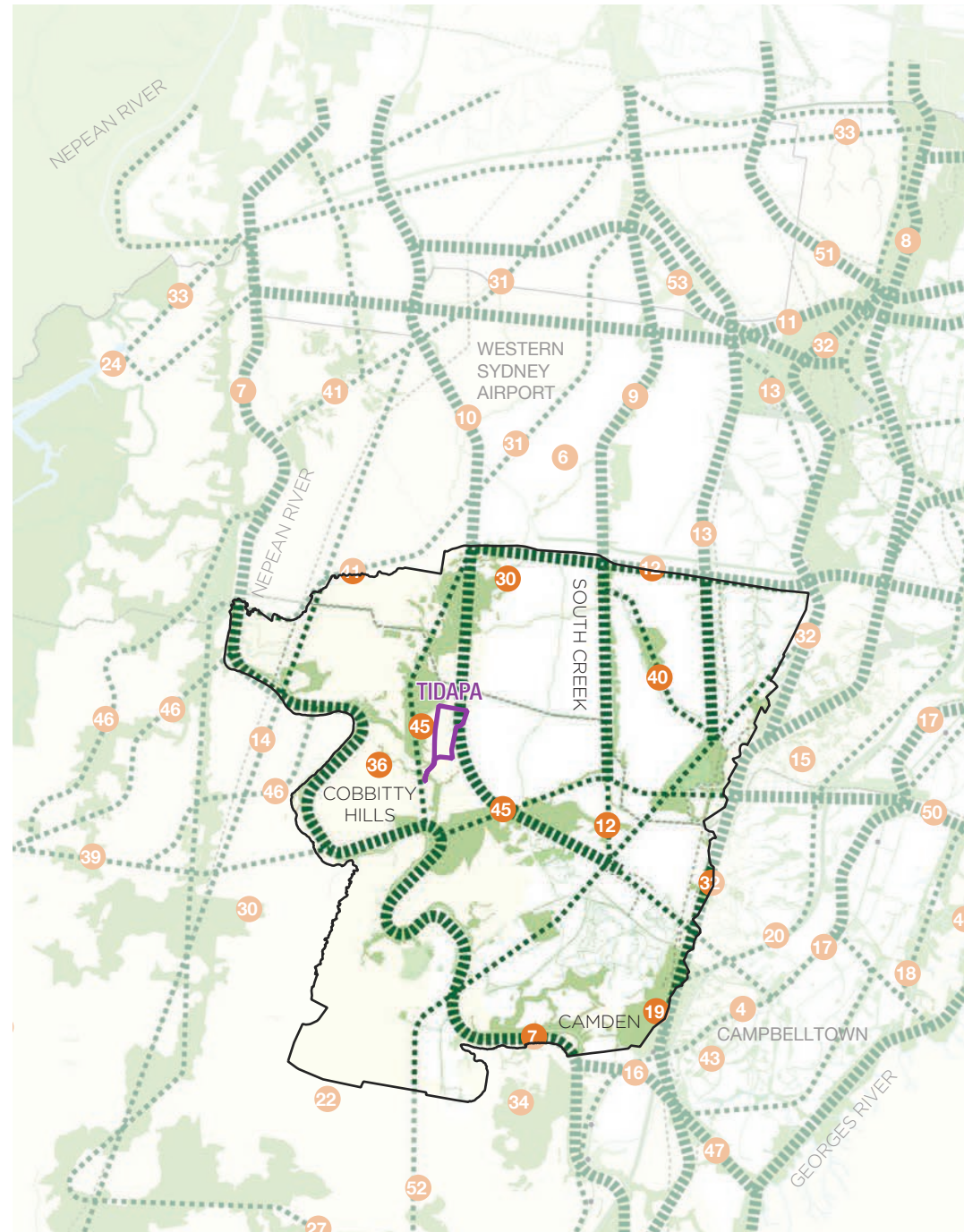
The plans aim to deliver a framework across five districts for integrated planning, where jobs, education and health facilities, services and great places are all within 30 minutes from where most people live.

KEY TAKEOUTS:

- **Infrastructure and Collaboration**
 - Increased use of public resources such as open space and community facilities, as a potential indicator for growth throughout Greater Sydney.
- **Liveability**
 - Designing places for people, potential indicator: increased access to open space
- **Productivity**
 - Developing a more accessible and walkable city
 - Establishing the land use and transport structure to deliver a liveable, productive and sustainable Western Parkland City
 - Increase percentage of dwellings located within 30 minutes by public transport of a strategic centre
- **Sustainability**
 - An integrated approach to green infrastructure – waterways, bushland, the urban tree canopy and open spaces – will improve sustainability and amenity as the District changes.
 - Valuing green spaces and landscape, protecting and enhancing bushland and biodiversity
 - Protecting and enhancing scenic and cultural landscapes
 - Using resources wisely - reduced transport related greenhouse gas emissions

GREATER SYDNEY GREEN GRID - SOUTH WEST DISTRICT

The Office of the Government Architect and Tyrrell Studio, 2017



Green Grid Project Opportunities: South West District.

Source: Tyrrell Studio, 2017

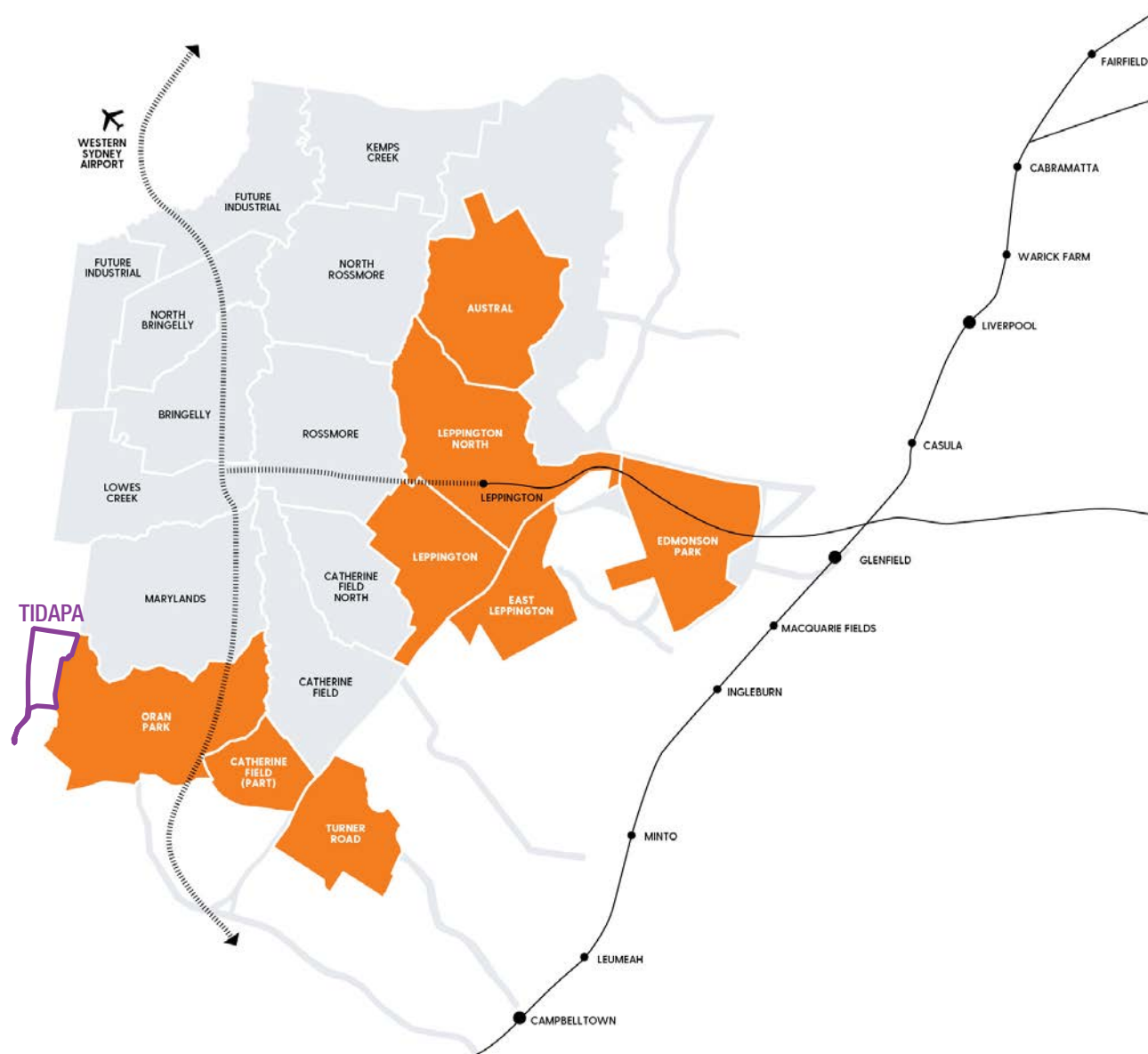
The Greater Sydney Green Grid considers the hydrological, recreational and ecological fragments of Greater Sydney in a cohesive green infrastructure network across six districts - one of which being the South West District that includes both Camden and Liverpool LGAs. Each district is analysed for its spatial qualities, open space, waterways, its context and key natural features, informing a series of strategic opportunity corridors and linkages.

KEY TAKEOUTS:

- The District is characterised by **two distinct landscape types**, **fertile clay soils** of the low-lying Cumberland Plain and the **escarpments of Hawkesbury Sandstone**. Both landscapes contain **diverse natural and cultural heritage** including agriculture, early colonial history, rural villages and natural bushland.
- **South West Growth Centre** will accommodate a large portion of the new dwellings in the district and allow **other land use values to be balanced** with urban development. **Increased population densities** associated with proposed urban renewal areas will place pressure on existing open space.
 - **Greater open space quality, quantity and connections** within these areas has the potential to improve the quality of life for communities and residents beyond the boundaries of any proposed development.
- **The South West Growth Centre** has potential to provide a **good distribution of open space and a public domain** linked with the underlying topography. Particular importance is the **provision of open space within areas not prone to flooding** to ensure equity of access to open space
- Greater Sydney Green Grid Aims:
 - *Increased access to open space* - **connect people with key regional open space** and promote the districts open space assets by creating better connections with major centres, new transport infrastructure and areas of urban renewal.
 - *Promote healthy and active living* - create a liveable green network of high **quality active transport links connecting key destinations, cultural facilities, recreation opportunities and heritage items**.
 - *Create new high quality public realm* - establish a **vibrant, pedestrian friendly public realm at key centres**, transport interchanges and urban renewal areas, **with places for gathering and good connections to open space**.

SOUTH WEST GROWTH AREA

NSW Department of Planning, Industry and Environment, 2020 (Ongoing)



South West Sydney Map. Source: GLN Planning

The South West Growth Area is a current and ongoing investigation for introducing better connectivity, jobs and homes around the Western Sydney Airport through a range of precincts including Oran Park. As a new approach to precinct planning in NSW, the Department of Planning, councils, State agencies and communities will work together in the development of places and planning frameworks within the South West growth area.

KEY TAKEOUTS:

- Working to **better connect new suburbs with the planned Western Sydney Airport at Badgerys Creek** and the broader **Western Sydney Employment Area**.
 - The **Western Sydney Employment Area** provides businesses in the region with land for industry and employment, providing people living in Western Sydney the chance to work locally and **spend less time commuting** and more time with their families
 - Precincts include **Oran Park**, Turner Road, East Leppington, Austral and Leppington North, Edmondson Park, Catherine Field and South Creek West.
- The Department **worked closely with Camden Council, stakeholders and the community** to take a coordinated approach to planning for **new homes and essential infrastructure**, to help meet community needs in **Oran Park**.
- The new **revitalised community at Oran Park** will benefit from up to **7,540 new homes** and the delivery of **local amenities close to transport options**, including:
 - New schools
 - **148 hectares of open space**
 - **12 playgrounds, local parks and recreation areas**
 - around 18 hectares of employment land, including a town centre
 - improved connections to **encourage walking and cycling**.

KEY PRINCIPLES TO INFORM THE GREENWAY



Enhanced Connectivity

- Flexible point-to-point mobility for short trips
- Promote open space assets by creating better connections with major centres, new transport infrastructure and areas of urban renewal.



Environment & Sustainability

- Protect and enhance bushland, biodiversity, scenic and cultural landscapes
- Using resources wisely - reduced transport related greenhouse gas emissions



Liveability & Wellbeing

- Places designed for people
- Increased access to open space and recreational facilities
- walking and cycling infrastructure, parks and open space to support health benefits
- Establish a vibrant, pedestrian friendly public realm, with places for gathering and good connections to open space.



Infrastructure to Support Growth

- Working to better connect new suburbs with Western Sydney Airport and the broader Western Sydney Employment Area
- An integrated approach to green infrastructure to improve sustainability and amenity as the district changes and grows
- Supporting open space targets for Oran Park community revitalisation and future growth.

STRATEGIC ASSESSMENT

Environmental Considerations and BioMap Corridors

- The Tidapa Greenway Project intersects with several BioMap regional corridors.
- Two significant vegetation and habitat clusters are located immediately north west, and to the south of the site, with high biodiversity and fauna records particularly in the southern area.
- The site is clear from any flood potential, placing it as an important area for the provision of open space, as stated within the Sydney Green Grid South West document.

BOUNDARIES

- Tidapa Site
- LGA Boundaries

CAMDEN HERITAGE GREENWAY

- Side Trips
- Greenway Route

LIVERPOOL GREEN GRID

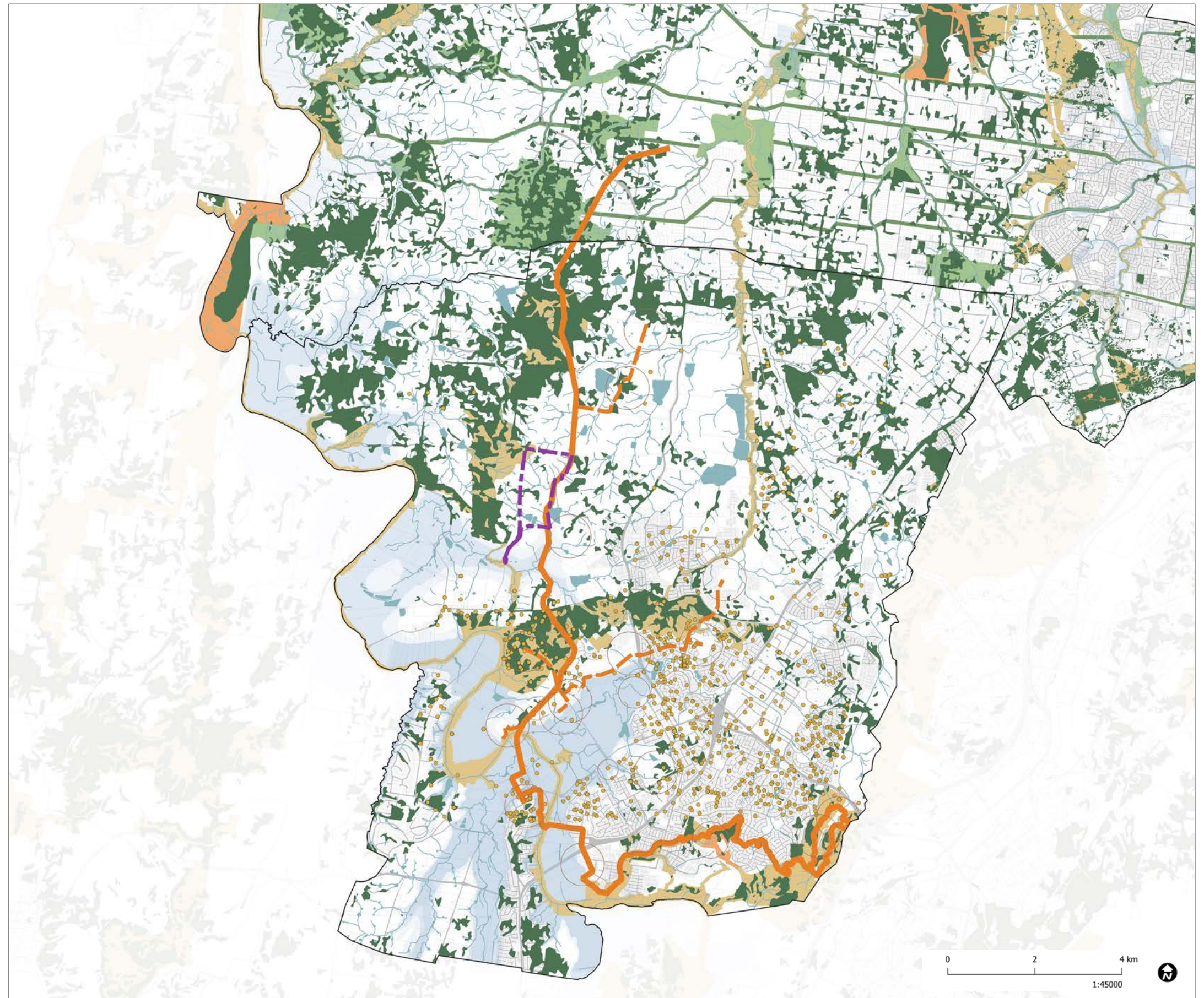
- Priority Areas
- Proposed Linkages
- Priority Corridors

ENVIRONMENTAL

- Camden Fauna Sightings
- Hydro Line
- Hydro Area
- NPWS Reserve
- BioMap Regional Corridors
- Flood Strategic Layer PMF
- Flood Strategic Layer 100yr

Canopy Cover

- CEEC NSW
- Cumberland Plain



STRATEGIC ASSESSMENT

Local Centres, Planned Growth Areas and Transportation

- Existing cycle network is expanded and enhanced through the Greenway, providing a continuous active transport connection to Western Sydney Aerotropolis in Liverpool.
- A number of local schools fall within the proximity of the Greenway to benefit from cycleway connectivity
- Western Sydney Airport (WSA) to the north will bring opportunities for national and international connections, as well as “thousands of jobs and opportunities for local businesses will be created” (NSW Dep. of Infrastructure, Transport, Regional Development and Communications).

BOUNDARIES

- Tidapa Site
- LGA Boundaries

CAMDEN HERITAGE GREENWAY

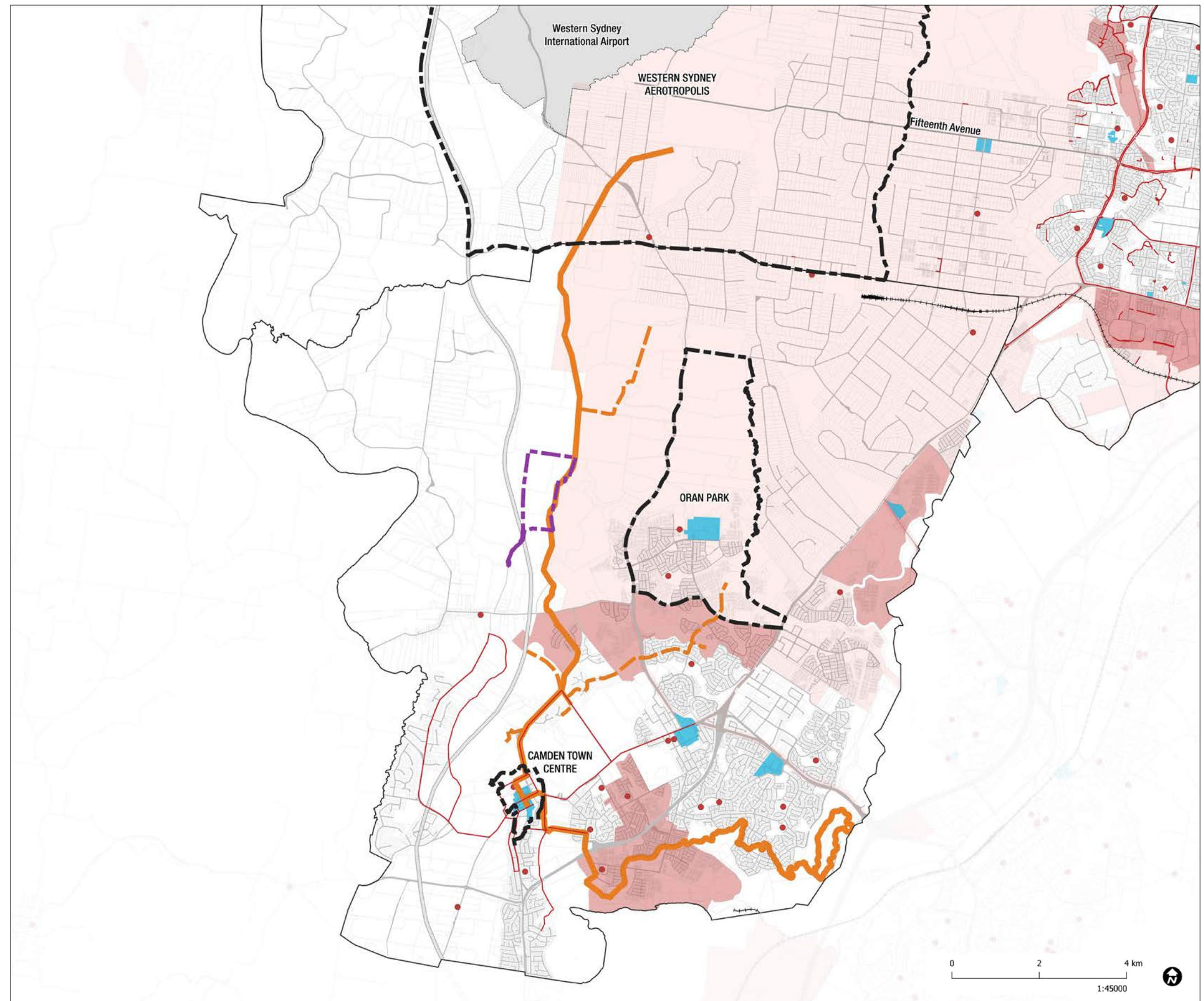
- Side Trips
- Greenway Route

TRANSPORT

- Cycleways
- Railway Corridors
- Outer Sydney Orbital
- Roads

PLANNING

- NSW Public Schools
- EPI Local Centres
- EPI Urban Release Area
- EPI Growth Centres



STRATEGIC ASSESSMENT

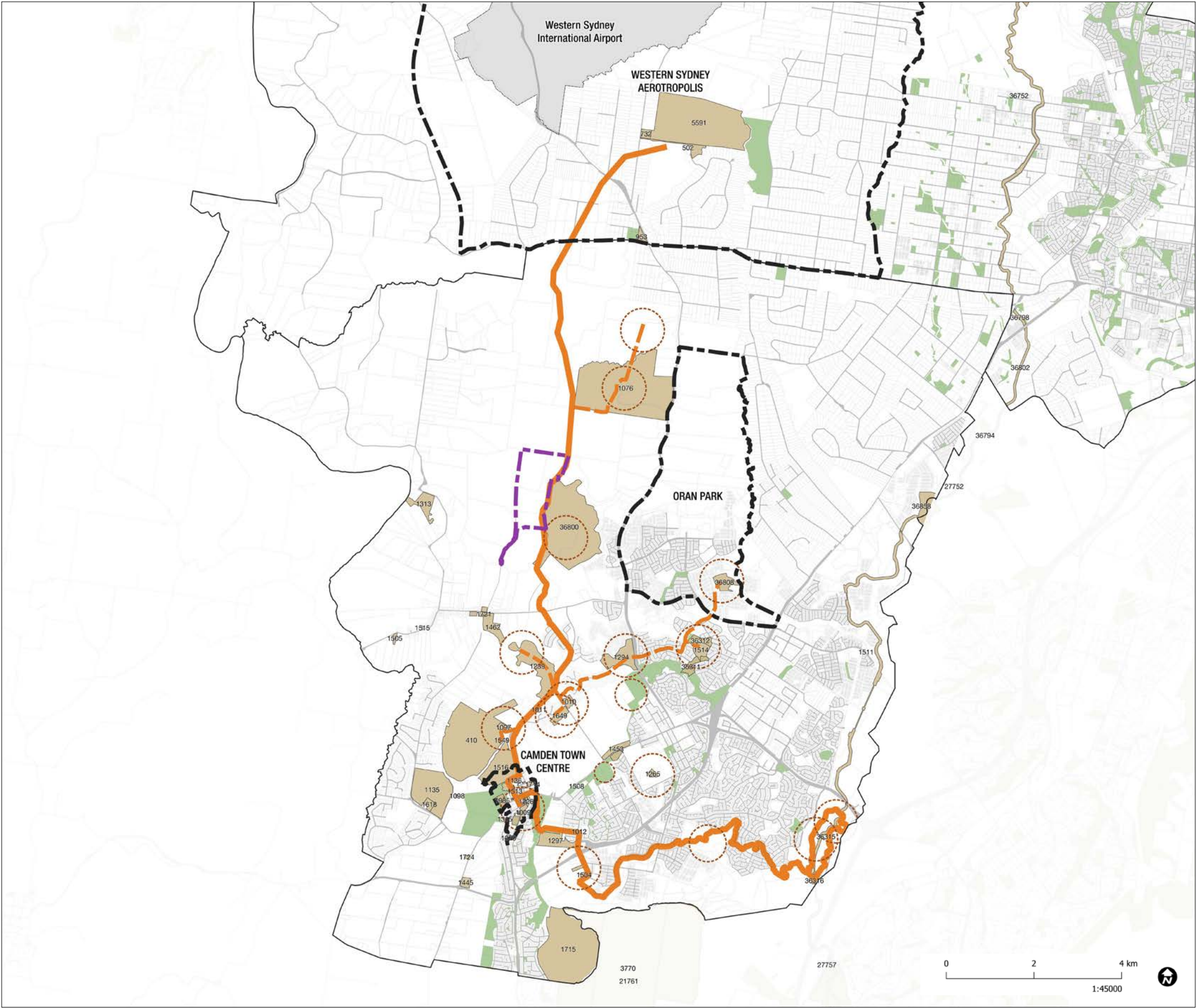
Heritage and Public Open Space

- A number of additional heritage sites as recognised within the state Environmental Planning Instrument (EPI) are located within the proximity of the Greenway and side trips.
- LEP zoning indicates a need for additional public open space and recreation for Oran Park and surrounding suburbs in order to support future growth under South West Growth District aims.

BOUNDARIES
Tidapa Site
LGA Boundaries
Roads

CAMDEN HERITAGE GREENWAY
Heritage Radiuses
Side Trips
Greenway Route
Western Sydney Intl Airport

HERITAGE & OPEN SPACE
Public Recreation
EPI Heritage Items

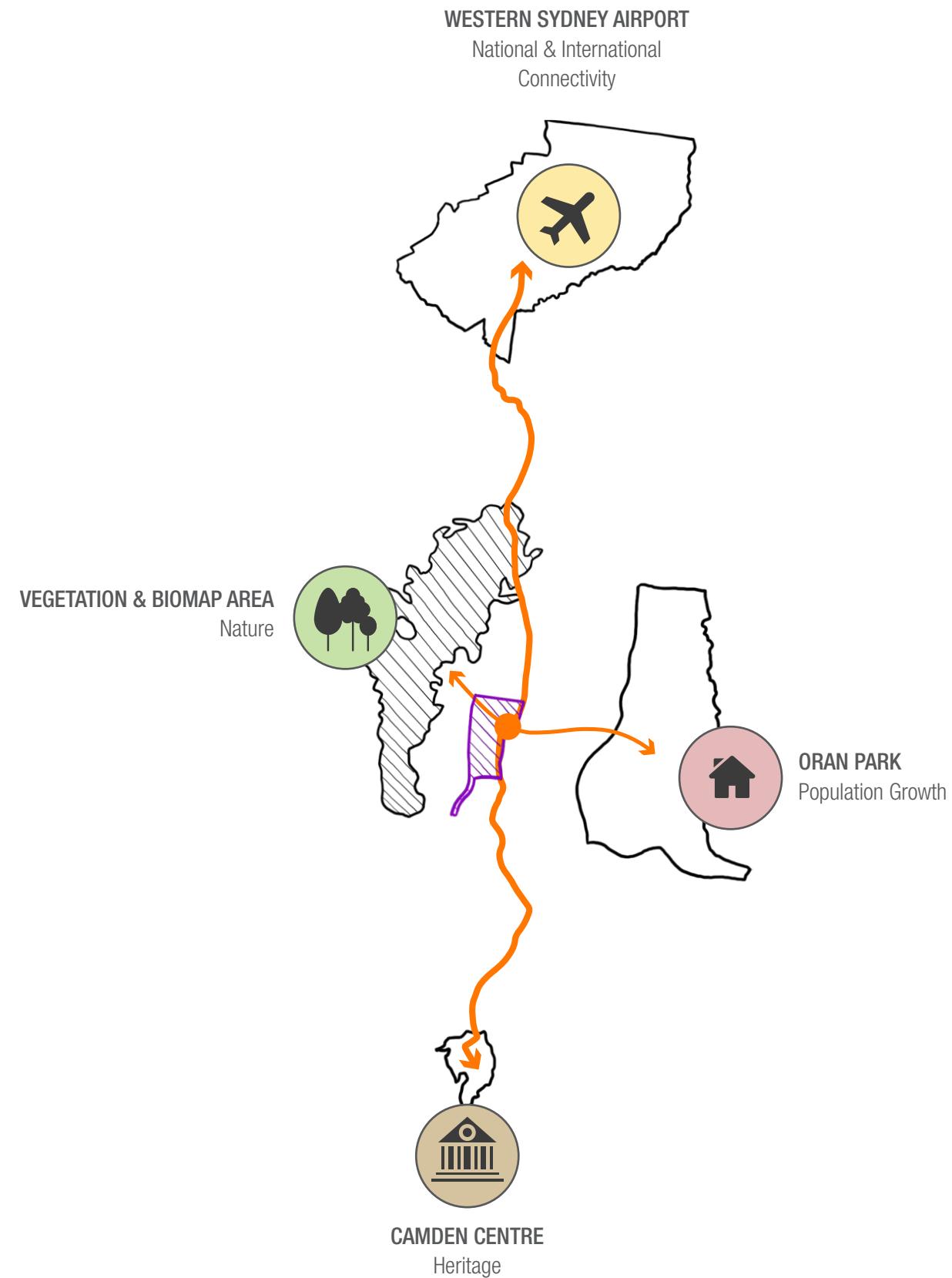


Heritage Item numbers relate to table in Appendix

STRATEGIC ASSESSMENT

Strategic Concept

- Four local and regional features anchor the site to the north, east, south and west.
- An additional side trip establishes a linkage between Oran Park, a significant area of future population growth, with the regional BioMap corridor to the west, reinforcing the transition of urban to nature laterally through the site.
- This side trip will unlock the Greenway and open space within the project site to future populations within the South West Growth Area
- The proposed town centre is sited at the crossroads of these north-south and east-west connections
- Each anchor has a unique character and contribution to liveability, connectivity, culture and environment.



STRATEGIC ASSESSMENT

Regional Opportunities

- 01

Western Sydney International Airport
Establishes a northern anchor and destination for the Greenway, servicing the future airport with a regional cycleway connection and linkage to both Oran Park and Camden Town Centre. Furthermore, the Greenway will increase the accessibility for new businesses and jobs at and around the airport.
- 02

Alignment with Liverpool Green Grid
Realignment of the Greenway to integrate into the Liverpool Green Grid structure, and connect to WSA
- 03

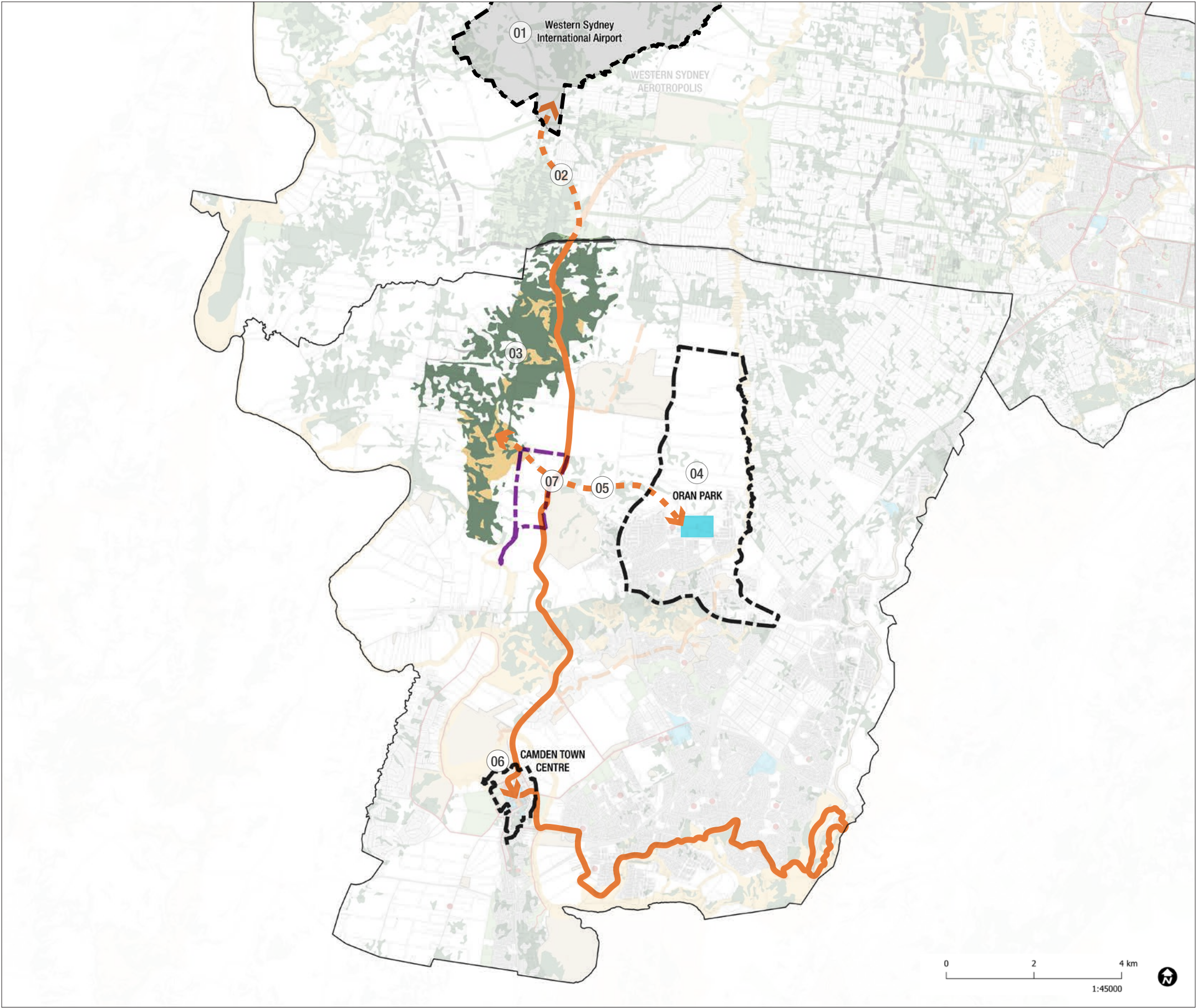
Nature Anchor
A significant extent of native vegetation forming an anchor to the west of the site.
- 04

Oran Park Anchor
Part of the South West Growth Area, with community revitalisation plans set to introduce 7,540 new dwellings.
- 05

Transitional Side Trip
Introducing a lateral connection and transition between Oran Park and the Tidapa Greenway Project, through to nature. Connecting Oran Park directly into the Greenway will enable access to quality open space for a growing population.
- 06

Camden Town Centre Anchor
Southern anchor point providing significant historical value and numerous destinations.
- 07

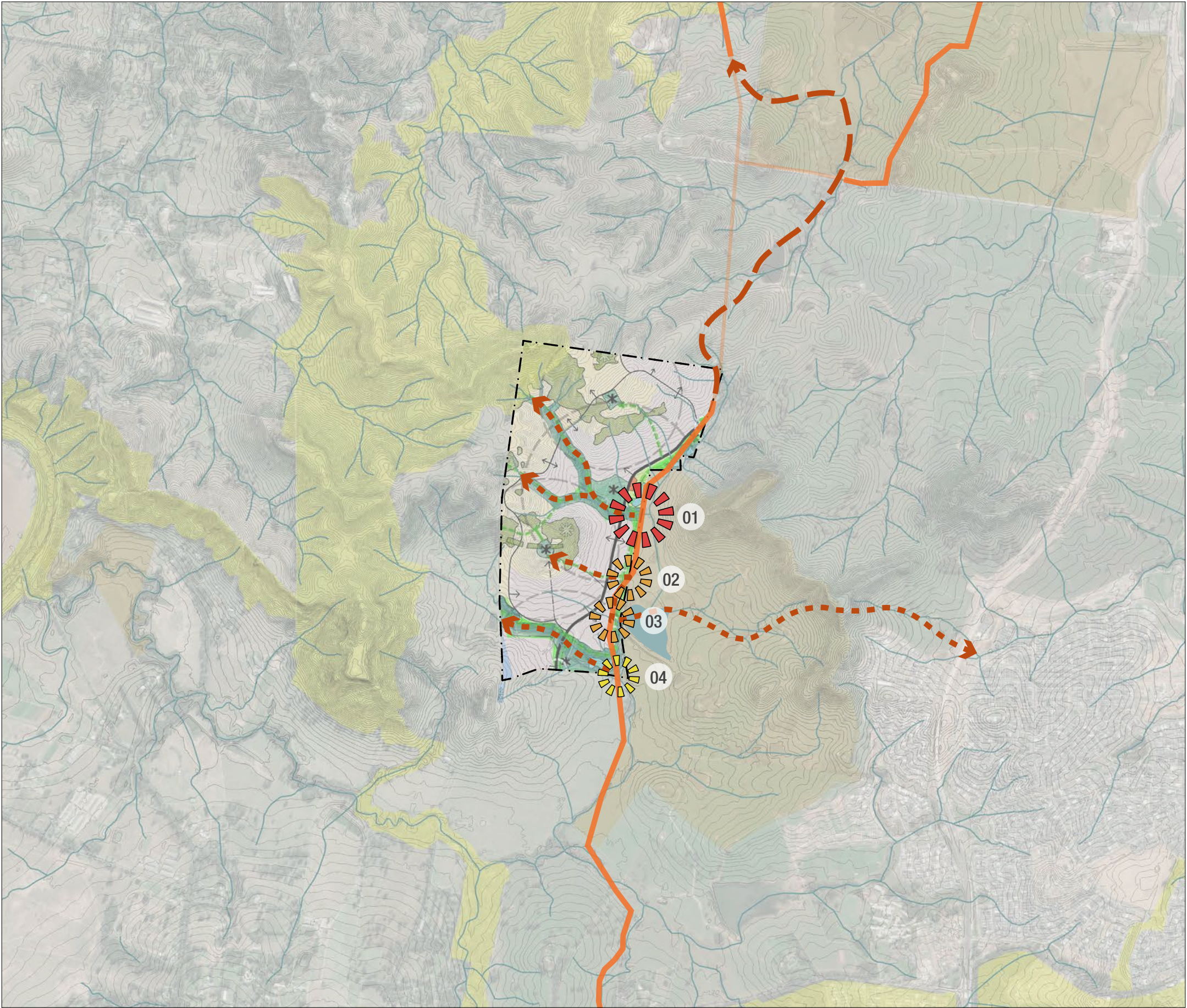
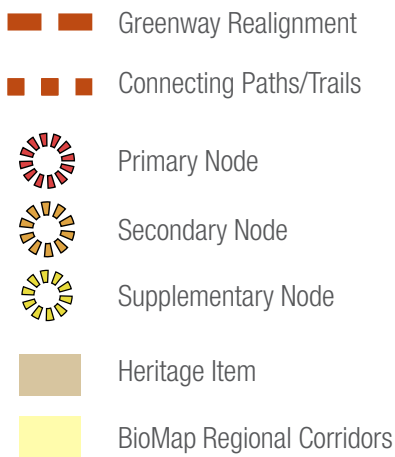
Tidapa at the Centre
At the intersection between all four anchors, the project site is well positioned to provide regional destinations and through connectivity for the broader Greenway.



HIGH LEVEL GREENWAY INTEGRATION IN DEVELOPMENT

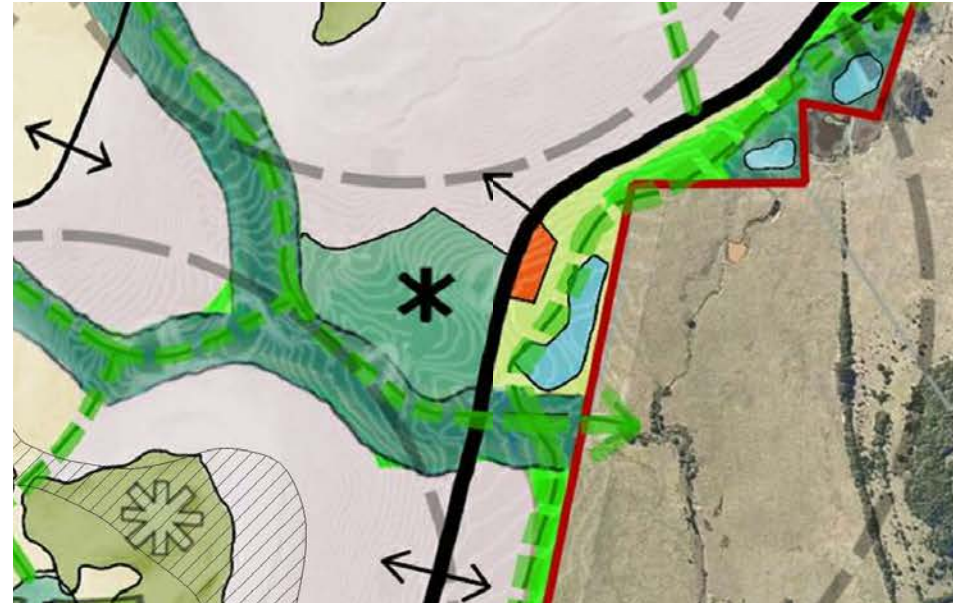
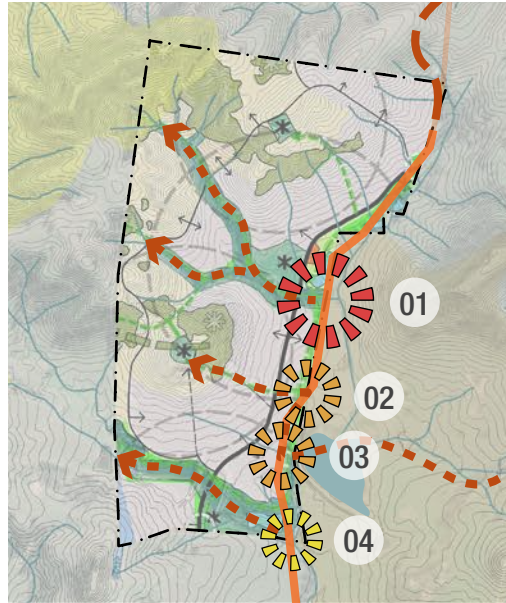
Local Opportunities

- Connectivity nodes established at the intersection between the Greenway and various side trips provide a framework for locating public amenities and open space destinations.
- The path and direction of the Greenway heading north of the site has been optimised for better grading and an easier cycleway experience.
- The additional side-trip to link Oran Park to the Greenway and project site are shown, which follows an existing creekline through the adjacent heritage curtilage.



HIGH LEVEL GREENWAY INTEGRATION IN DEVELOPMENT

Character Areas



01 Town Centre

Located at the cross-roads of the north-west and east-west connections, introducing a more formalised parkland setting with public amenities, recreation and play spaces.



02 Chain of Ponds

Creek rehabilitation for biodiversity enhancement and connectivity with opportunities to integrate with existing dams and rural character open spaces for recreation adjacent water-bodies.



03 Dam

Creating a dramatic public open space opportunity through the possible activation of adjacent dam.



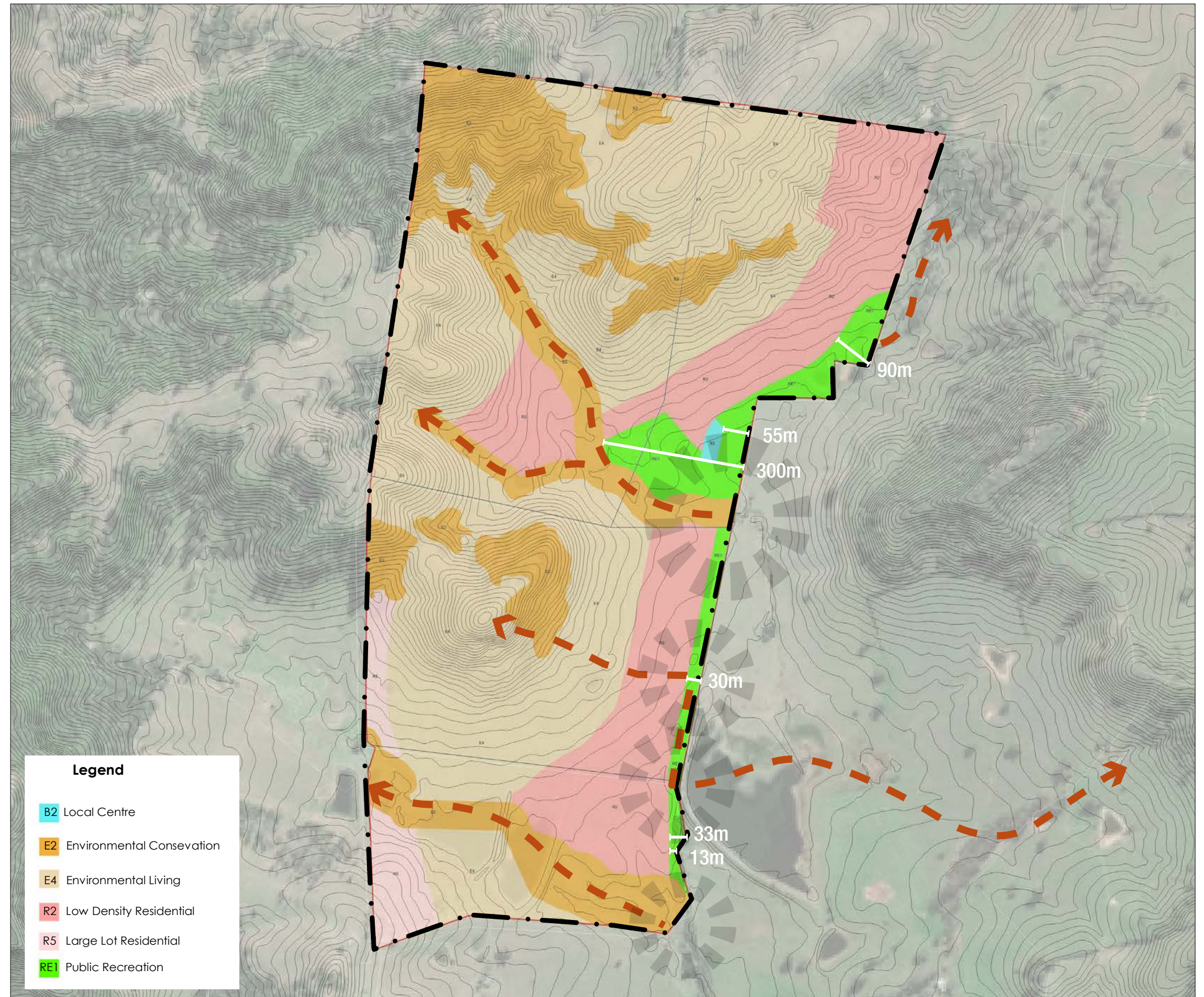
04 Forest Trails

Connections to the Greenway offering a more intimate experience through nature and remnant forest.

HIGH LEVEL GREENWAY INTEGRATION IN DEVELOPMENT

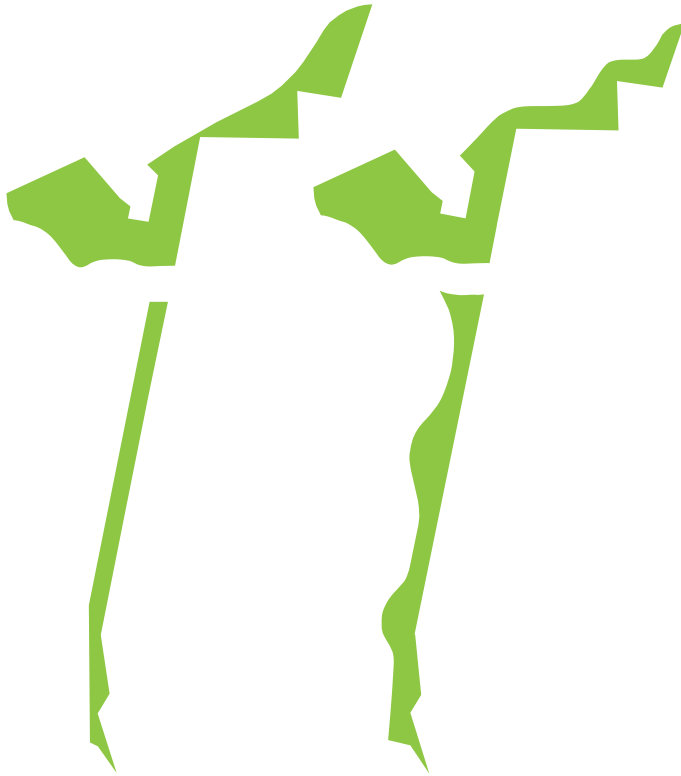
Greenway Width Provisions

- Greenway widths at some points become too narrow, particularly at pinch-points caused by the shape of the boundary.
- 30m is an adequate width, but greater variation is encouraged along continuous sections to break up programs and activities.
- A redistribution of open space from the one single large area, to many smaller open space programs along the Greenway would allow for greater diversity and variety.



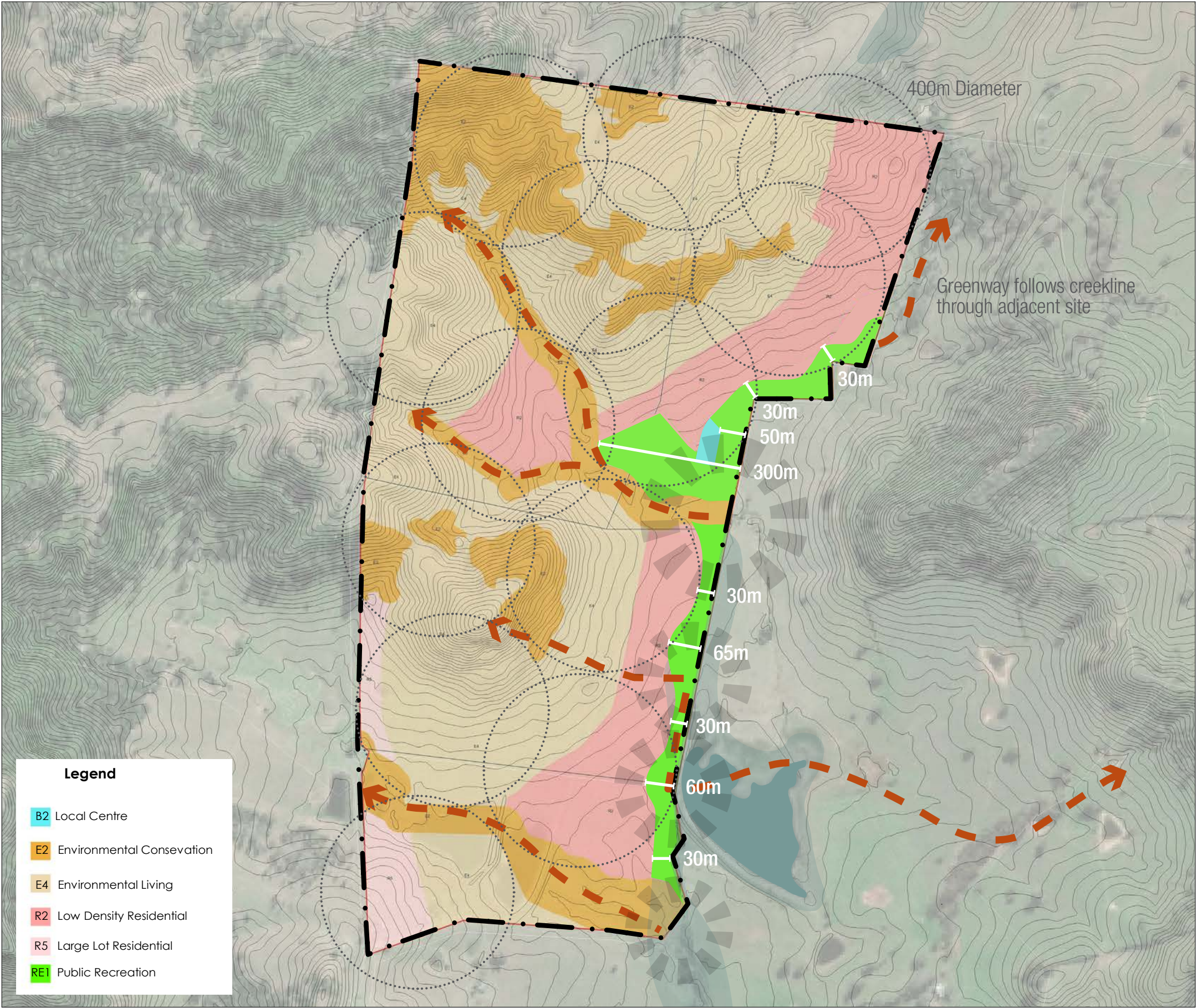
HIGH LEVEL GREENWAY INTEGRATION IN DEVELOPMENT

Greenway Realignment



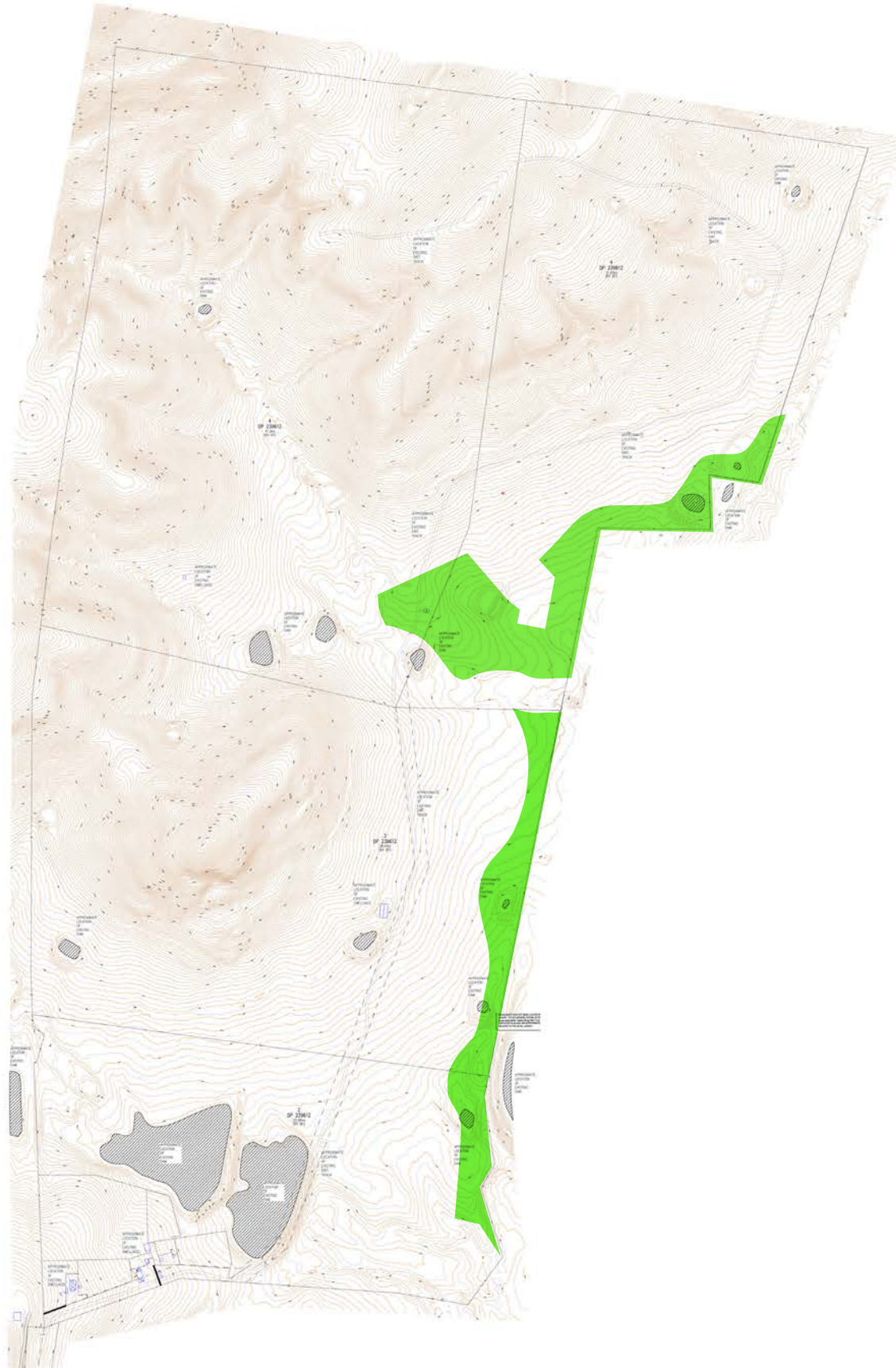
CURRENT
~7.8ha

REALIGNED
~8.6ha



HIGH LEVEL GREENWAY INTEGRATION IN DEVELOPMENT

Greenway Realignment



HIGH LEVEL GREENWAY INTEGRATION IN DEVELOPMENT

Precedent Imagery



Lea Valley Bridge, London



Smaller Scale Cycle and Play Opportunities



Sydney Water Park Re-Use Project



Tujunga Wash Greenway Restoration, Los Angeles, CA



Ballona Discovery Park



Windsor St, Oxnard





APPENDIX

Heritage Catalogue correlating to ‘Heritage and Public Open Space’ mapping.

Source: Environmental Planning Instrument

OBJECTID	H_NAME				
410	Camden Airport	1314	Archaeological Site	1619	Cottage
502	Kelvin Park Group, including site landscaping, homestead, kitchen wing, servants's quaters	1315	Bungalow	1649	Camelot
732	Two water tanks (former water supply to OTC staff)	1370	Camden District Hospital	1650	House
915	Old Dairy Farmers Depot	1371	Former Froester's Hall	1651	St Andrews Church
953	Bringelly Public School Group, including schoolhouse and former headmaster's residence	1373	House	1652	Cottage
1008	Taplin	1385	Cottage	1675	Agricultural Hall
1009	St John's Church	1386	Mitchell House	1714	Stockyard
1010	Kirkham Stables	1387	House	1715	Belgenny Farm
1011	Caernarvon	1388	Milestones and Mileposts	1716	Cottage
1012	Cottage	1438	Former Clinton's Motor Ga	1717	Brookfield House
1013	Edithville	1439	Former Plough & Harrow In	1718	Cottage
1014	House	1440	Cottage	1719	House
1052	Smeaton Grange	1441	House	1721	St Paul's Church
1053	Corner Shop	1442	Archaeological Site	1722	House
1054	Cobbitty Public School	1443	Bank	1724	Roman Catholic Cemetery
1062	Mitchell House	1444	Bank	1725	St Paul's Rectory
1063	Coner Commercial Building	1445	Camden District Cemetery	1726	House former presbytery
1064	Chesham's Cottage	1453	Yamba	1728	Burton Arms Inn
1065	Camden Library and Former	1462	Pomere Grove Teen Ranch	1984	House
1076	Maryland	1471	Macarthur Park	1985	Camden Show Ground
1079	Post Office	1472	Former First Camden Bank	1987	Nepean House
1080	Cottage	1473	House	2206	Masonic Lodge
1081	Cottage	1503	Cottage	2326	Rheinburgers Hill
1082	House	1504	House and Curtilage	3770	Camden Park Estate House and gardens
1092	Court House	1505	Windemere	5591	Former OTC Site Group, including radio receiving station and site of former staff housing
1097	Hassall's Cottage	1506	Cottage	21761	Camden Park Estate - Dairy No.8, Cottages and Orchard Sites
1098	Macquarie House	1507	House and Curtilage	27719	Ingleburn Dam
1101	Cottage	1508	John Oxley	27752	Upper Canal System (Pheasants Nest Weir to Prospect Reservoir)
1102	Workers Cottages	1509	Camden Public School	27756	Sugarloaf Farm, homestead group and rural landscape setting
1135	Carrington Hospital	1510	Macaria	27757	Upper Canal System (Pheasants Nest Weir to Prospect Reservoir)
1136	Nant Gwylan	1511	Upper Canal	36310	Harrington Park
1137	Cottage	1512	Cottage	36311	Harrington Park
1138	Brookfield House	1513	St Paul's Church	36312	Harrington Park
1150	Tildsey Butcher Shop	1514	Harrington Park	36315	Upper Canal
1152	Cottage	1515	Riverview	36316	Upper Canal
1153	Cottage	1516	Camden Town Farm	36752	Upper canal system
1239	Wivenhoe	1532	House	36794	Canal
1265	Studley Park	1533	Cottage	36798	Canal
1266	Inter-war flat building	1549	Macquarie Grove	36800	Denbigh Curtilage
1294	Orielton	1550	Bin Linden	36802	Canal
1297	Belvedere	1581	House	36808	
1298	Bungalow	1585	Whiteman's	36858	Upper Canal
1313	Sandstone and timber barn (part Matavai farm complex)	1594	Cottage		
		1618	WWII Transmitter Bunker		